



2022 Lancaster City Museums A YEAR IN REVIEW

241,000

The number of people who have engaged directly with our museums in the past year.

(visits and digital)

£147,000

The amount of grant funding that the museum service has secured in 2022.

2022 has been the first full year of opening for the City Museums since 2019, so it has felt quite special to us.

Over the year we have staged 10 exhibitions looking at the local area and worked with 41 local organisations and individuals, who represent a diverse cross-section of the local community.

We have developed funding applications with partners that have secured almost £137,000 of grants to support the work of the museums and partners. We also secured a further £10,000 of grants, supporting our work around developing our audiences and making the museums more accessible.

Discover more about the work that we do, as we take a look back at 2022 and all that Lancaster City Council's Museum Service has achieved.

I am delighted and heartened to see all the work by those who run Lancaster's museums. I am a long way from home, about as far as it is possible to be, but I love to read of the exploits and innovations bringing the history of my hometown to life for current and future generations. Please don't stop.

Myfanwy, Facebook

**LANCASTER
CITY COUNCIL**

Promoting City, Coast & Countryside

4 ACCREDITED MUSEUMS

City Museum (est. 1923)
King's Own Royal Regiment
Museum (est. 1929)
Cottage Museum (est. 1978)
Maritime Museum (est. 1987)

SERVICE AREA Museums

ELECTED MEMBER LEAD
Councillor Sandra Thornberry

TEAM LEADER
Museums Development
Manager
Carolyn Dalton

2003 - 2018
Managed by Lancashire
County Museum Service.
2018
Came back to Lancaster City
Council

A YEAR AT THE MARITIME MUSEUM

**Retail Income
+36%**
**Cafe Income
+6%**
based on 2021/22 vs
2019/20



The Maritime Museum has a small but very mighty team. By pulling together and going way beyond what is expected of them, the team here has delivered an ambitious year full of engagement, activity, inclusion, fun, learning and positivity.

We have spent the last 18 months inviting visitors to tell us how we should be talking about the Transatlantic Slave Trade, and with help from our PhD Intern, Sophie, we are collaborating with Lancaster Black History Group to ensure that our gallery text is representative of the whole story.



The Workhouse Challenge team, Summer 2022

What an absolute gem! My daughter and I had a wonderful time, we must have gone around it 7 times searching for clues for the trail. The poignancy with which the museum explains the participation of Britain in the slave trade is humbling, and the section on navigation is wonderful; really engaging for both adults and children...The staff are lovely, so helpful and chatty, all in all, highly recommended.

Zoe, Facebook

Literally one of my favourite museums and one of my favourite places in Lancaster...the parts where its beautiful history has been kept and remembered and celebrated is magnificent and this museum is one of them.

Jodi, TripAdvisor



A YEAR AT THE CITY MUSEUM

1,800

The number of people who visited the City Museum over Dinofest weekend



Lancaster City Museum continues to welcome thousands of visitors through its doors. We have achieved so much over the last year, including making significant connections with the community.

New exhibitions and activities have offered more for families to do. We welcomed many community groups, including refugees from Ukraine, Iran, and Syria.

Several external groups used us for public consultations and our community case hosted a range of artwork and things that matter to our community, including a Pride month display.



The Owtram Sisters talking about their experiences as Code Breakers



Watch Patricia Owtram's story on our website www.visitlancaster.org.uk/museums

I want to express my sincere thanks to the staff handling the LCM today. I arrived with a group of undergraduate students who are investigating the way a museum connects with different actors in society....the staff were so accommodating and professional in the way our visit and questions were handled that I must congratulate you for such approach.

Dr. Allan Discua Cruz, Lancaster University Management School.

When I come into the museum I feel like it's a sanctuary.

Regular visitor



A YEAR AT THE COTTAGE

The Cottage continued to welcome visitors to the atmospheric Victorian home. Visitors love the personal interpretation on offer, and the array of once familiar domestic objects. The Cottage was the backdrop for two filming projects this year, one was a student film and the other was the setting for a film created for the City's Museum's exhibition Going to East Road.

One of the smallest museums I've visited..... You certainly get to realise what life was like for its Victorian inhabitants. This is well worth a visit and is an education for children to see how this preserved cottage would have been lived in centuries ago.

Trip Advisor review.



A YEAR AT THE KING'S OWN

Staff and volunteers have converted and checked collections data, adding over 5,000 objects to a digital collections management system. This will make the collection more accessible to staff, enquirers and the local community.

Our year 5's went on a trip to check out the King's Own Royal Regiment Museum to finish off their World War One topic. The children really enjoyed walking round the museum, looking at all the displays and gathering research to help them with their learning.

Bowerham School



LEARNING



260
The number of children who are HDC Members

We have diversified our activities for children through our History Detectives Club. Aimed at children aged between 8 and 16, the club has enabled us to connect with families and create opportunities for them to explore the museums and make discoveries together.

We give children from low-income households opportunity to participate in fun activities without the barrier of cost, and we provide informal learning that supports the national curriculum.

We continue to work with Heritage Learning Lancashire to deliver formal education sessions.



EXHIBITIONS

A changing programme of exhibitions ensures that there is always something new for regular visitors to see. It also means that we can exhibit more of our collection and support local partners and individuals by showcasing their work.



Lancaster's Black History

The team are involved in the Facing the Past Project, aimed at redressing omissions in how we tell the story of the role Lancaster played in the Transatlantic slave trade and of the enslaved people who visited or stayed here.

Sophie, a PhD intern has been working to bring different voices into our permanent galleries at the Maritime Museum.

We have worked on several projects with the Lancaster Black History Group (LBHG) in 2022. The group's Slavery Family Trees project has uncovered many previously unknown stories of Lancaster's enslavers and the people that they enslaved. The findings of the project were incorporated into a collaborative exhibition at the City Museum.



Visit the online exhibition on our website.
www.visitlancaster.org.uk/museums

I really liked the new Slavery Family Trees exhibition - I thought that the labelling was well designed and clear to read, the subject matter (slavery) was handled with sensitivity and I really liked that various local schools and other groups all collaborated to research different sections.

Mystery Shopper

The Hinge of Fate

It has been a pleasure to work with the Trustees of the King's Own Regiment Museum on Hinge of Fate: living with uncertainty in 1942. The project highlights the year 1942 and how the war was tackled both at home and in active service through uncertainty, resilience, and resolution.

The Trustees, working in partnership with the Museums, received £60,000 from the National Lottery Heritage Fund for the 'Hinge of Fate' project. The mutual support between the Trustees and the museum service continues to gather pace.



Visit the online exhibition on our website.
www.visitlancaster.org.uk/museums

www.visitlancaster.org.uk/museums



Lancaster Art Society Open Exhibition

Local Artists exhibited their work in this regular selling exhibition at the City Museum



Navigation: Times, Tides, Stars & Charts

Featuring graphics from the Smithsonian Institute (US), this exhibition at the Maritime Museum narrated how we have found our way around land, air and of course the sea for thousands of years.



Morecambe: The Naples of the North

The success of this fun and entertaining exhibition meant that it was shown at both museums.



By the Water

An intimate look at how artists in our collection have presented water through their work.



Going to the Sand

Tessa worked with the Lancashire inshore fishing families and showed three years of work through her documentary exhibition at the Maritime Museum.



Going to East Road: Lancaster's Workhouse

Researched and written by Lancastrian Research, this poignant exhibition at the City Museum uncovered the lives of those who found themselves at the Workhouse.



Lancaster Rewind Festival Exhibition

An indulgent look back at 1972 in this short-run BID/HPA Architects exhibition at the City Museum.



Hinge of Fate: living with uncertainty in 1942

A Heritage Lottery-funded programme, including an exhibition developed in partnership with the Trustees of the King's Own Museum.



Lancaster's Slavery Family Trees

A collaborative exhibition featuring research by the Lancaster Black History Group.



Timescapes: Travelling Through Climate Time

The team at Lancaster University Architecture Department worked with local high-school pupils to create Morecambe of the future.



@lancastercitymuseums

IMPROVING OUR GREEN CREDENTIALS

LED Lights & Secondary Glazing

The quality required of a Museum LED lamp is very different from a standard shop or office one. Our lamps are specially designed for museum galleries, and they come with a special filter that reduces the deterioration of organic and synthetic colours and materials like bones, papers and dyes in fabrics etc.

Electricity usage has been significantly reduced at the City Museum since 2014 when we began to replace the halogen with LEDs. Further support has been given by the Council's de-carbonisation programme for replacing the remaining halogen lights with LEDs.

The same support was received from the Council to ensure that both of our larger museums have had secondary glazing installed in some areas to minimise heat loss.

We are really very grateful for the support we have received to enable us to do this work.



One of the artworks by local students from the Timescapes: travelling through climate time exhibition.

Reduce, Re-Use, Recycle

Museums have promoted the idea of not throwing things away for as long as they have been a concept.

Since 2018 all our temporary exhibitions have been created by using recycled and recyclable materials.

All of the text panels that we use in exhibitions are re-used to create labels and other information panels, or re-displayed in other local venues.

Digital Engagement

We have continued to sustain and develop the digital side to the service that we offer. Across Facebook, Twitter and Instagram we have over 13,000 followers and clocked up 190,000 active engagements (likes, shares, comments, image clicks etc).

Many people living with at home with a disability like to engage with us via social media. Online we are able to tell more local stories than we can in our galleries.

We have also continued to develop our website offer via our microsite on Visit Lancaster. Including videos and two more virtual exhibitions.

www.visitlancaster.org.uk/museums

Lancaster City Museums

WELCOME TO THE ONLINE HOME OF LANCASTER CITY MUSEUMS –

Places where the past becomes part of a thriving future

Discover stories about Romans, Vikings and Georgians with [Lancaster City Museum](#).

Learn about Georgian Lancaster and its rich maritime history at [Lancaster's Maritime Museum](#), and experience an intimate glimpse of early Victorian life in the wonderful [Cottage Museum](#).

Find out more about our city's rich history by viewing our exhibitions programme or discovering fascinating stories from our [Collection](#).

Share your stories and objects with us and learn more about [Our Shared History](#).



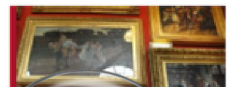
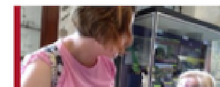
LANCASTER CITY MUSEUM



LANCASTER MARITIME MUSEUM



THE COTTAGE MUSEUM



ECO-FRIENDLY PEST-CONTROL

We have been trialling innovative, environmentally friendly ways of controlling pests in our stores through thousands of microscopic *Trichogramma* wasps (each the size of the sharp end of a pin), reducing the need for chemical intervention.

THE MUSEUM COLLECTION



70,000

The number of objects that we care for + 30,000 for the King's Own.



2022 has been an exciting year for the museum collections. We have taken in nearly 100 new objects which were kindly donated by the local community to help us better tell the stories of Lancaster, Morecambe and the surrounding area.

These include a set of models of Robert Gardner's 'Little Ships' which sailed from St George's Quay, indentures binding children to work in the mills in Caton, a collection of objects relating to the local work of the Inshore Fisheries and Conservation Authority, a large collection of lead seals that tell the story of flax and hemp coming into the port of Lancaster from Russia, and the medals and certificates of Mary Pye who worked for St John's Ambulance in the area for over 20 years.

Thanks to generous funding from the Friends of LCM, we bought a painting of Lancaster Market in 1952 by Jeremy King. Last year they helped us to purchase a poesy ring from the 1700s.



Centenary Celebrations

We have lots to look forward to next year. Not least that 2023 is the centenary of the opening of the City Museum and the founding of the museum collections - with items from the Storey forming the base of that early collection.

We will be focusing on the museum collections during 2023 and planning a celebration event at the City Museum on Sunday 5 November.

Community volunteers and staff are working on producing 100 podcasts for the '100 Years, 100 Objects' project and at the end of the year we are aiming to have a '100 favourite objects' exhibition where the people of the district nominate their favourite objects from the museum collections.

I've loved this place since childhood. Looking forward to the centenary celebration.

Gillian, Facebook



INCREASING ACCESSIBILITY



Members of the Beaumont College Student Union on their advisory visit to the Maritime Museum

As the museum collection continues to develop and national research proves the wellbeing benefits of museums, we are looking to refocus our approach and find new ways to broaden the reach and impact of our work. These have included long-term loans, outreach projects and removing barriers to engagement.

We created an Equity, Diversity & Inclusion Action Plan outlining our priorities for making our museums more welcoming and accessible.

Our Disability Advisory Group was formed this year following an in-depth accessibility audit, funded through Museum Development North West. The report continues to inform our EDI work.

Feeling As Seeing

Lancaster's art collection will soon be brought to life for those with sight loss and other visual impairments thanks to a grant of £16,000. Working with Lancaster University's School of Engineering and Galloway's Society for the Blind we are working with university interns to 3D print relief images of some of the paintings on display at the museums. With an audio description likely to be included as an extra interpretative aid.

We are also aiming to print small or fragile objects from the museum collection and make them available for people to touch.

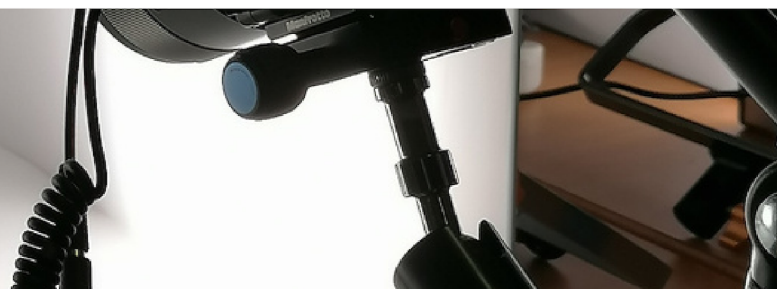
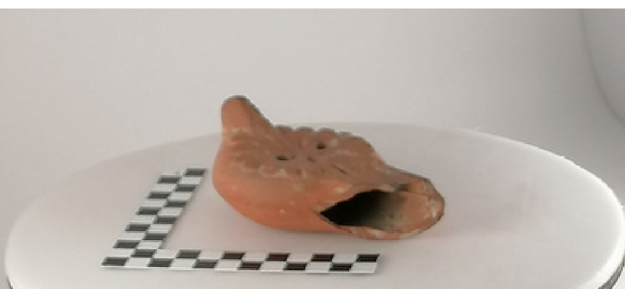


Members of the Maritime Museum have delivered four hands-on local history sessions at the Sands Care Home in Morecambe. The residents loved having the museum team visit.

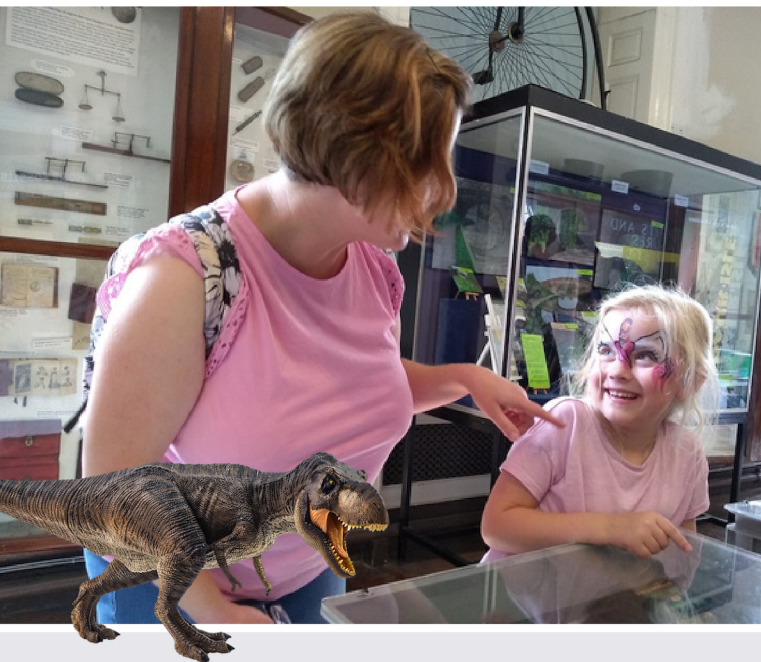


This is such an exciting and inclusive way forward and I am delighted that our museums, the university and Galloway's have worked together to secure this funding which will help to make our museums more accessible to those with sight loss.

Professor Claudio Paoloni
Head of the School of Engineering Lancaster University



PROJECTS AND PARTNERSHIPS



Dino Fest

Working with the Lancaster BID, we secured a Royal Society grant to support this year's Dino Fest.

Based on Lancaster's Sir Richard Owen (co-founder of the Natural History Museum and inventor of the term 'dinosaur') there was a fossil 'show and tell' and talks from two eminent palaeontologists.

Over 1,800 people visited the museum over the weekend and footfall in Market Square was up 74%.



Dr Dean Lomax and Dr Jeremy Lockwood were FANTASTIC! Very engaging talks. Dr Lomax was especially interesting, educational and charismatic.

Anon, Visitor Survey



Hidden Histories PhD

In partnership with the University of Central Lancashire we have been fortunate to have been awarded £60,000 from the Department of Trade & Industry.

The Creative Practice PhD will look at museum best practice engagement with Black history – looking at two different black histories with the history of Lancaster and the slave trade and then the history of Black entertainers in Morecambe.

It was wonderful to be the only Humanities project to receive UCLan Industry funding (c.£60,000) for a PhD Creative Practice Project in Curating Hidden Histories in partnership with Lancaster City Museums. ...This collaborative project is very exciting combining curatorial and academic expertise to create new displays for the City.

Professor Alan Rice, UCLan & Co-Director Institute for Black Atlantic Research

Roman Bathhouse & Wery Wall

This year has seen the publication of Jason Wood's report on the Roman archaeology of the fort site. It features the almost certain discovery of a rare northern example of a Romano-Celtic temple.

The next steps are to develop a Research Framework to inform where investigations (both excavation and geophysics) should take place next. An expert Advisory Group are helping the Council to take this forward. The Council also granted a small uplift in the museum budgets to help care for the Roman Bathhouse and Wery Wall site and a survey is now underway.



PROJECTS AND PARTNERSHIPS



Lancaster University

Over 2022 we have been working with Imagination Lancaster on an Arts & Humanities Research Council application for a research project to look at co-design in museums. The work will be supported by an advisory group from York, Exeter and Derby Museums.

We have also supported the University at various times throughout the year by enabling them to conduct public evaluation via the City and Maritime museums.

This research will look at embedding creative and collaborative practices in the Museums of Lancaster to catalyse innovative practices in the museums' team and leverage new resources and capabilities from the local communities to support the relevance of the museums in Lancaster.

David Perez

Lecturer in Radical Co-Design at Lancaster University



Global Link

We have supported Global Link with their Migration Stories NW project. In return they have supported the Hinge of Fate project, producing a digital story on a young Second World War refugee to Lancaster, researched and produced by current refugees who were able to give a unique perspective on the story.



Watch Friedl Kienzl's story on our website.
www.visitlancaster.org.uk/museums

Many thanks again for all the help you have given us with this project - our stories and the experience of our volunteers is so much richer for your involvement.

Alison Lloyd-Williams, Global Link

Light Up Lancaster

During the Hinge of Fate project, we worked with the Light Up Lancaster Team, who in-turn engaged 60 school children from Sandylands school, Morecambe to co-create artwork.

During Light Up Lancaster over 3,000 people came through the City Museum doors, and enjoyed the light art installation 'Waiting For a Message From Home', which feature a King's Own soldier and paper lantern doves, with live music and instrumental pieces from all around the world, inspired by locations the King's Own were stationed during 1942.



PROJECTS AND PARTNERSHIPS



Lancaster Music Festival

The team from Lancaster Music Festival worked with the Hinge of Fate project team to create a lively and fun ENSA-Style musical event which was researched, planned and arranged by a group of young participants from the district.

This event took place in Market Square and included participatory Lindy hop circles, a ukulele orchestra and several big band shows.

People were literally dancing in the square!

The project is important to LMF as it allows us an interesting way of connecting with young people through a specific musical genre. Its a fabulous portal between the music of then and now.

It has been an absolute delight engaging with the museum, history and music of this time.

**Lucy Reynolds, Director
Lancaster Music Festival**



WI 1942 Food-tasting event in Market Square

With huge thanks to everyone else who has supported the museum service throughout 2022.



The Dukes Theatre

Eating for Victory was a project between The Dukes Theatre and the Hinge of Fate team, which produced videos featuring young people, with the help of Wayward Productions. The participants had a 'cake-off' and sampled delicacies from the Second World War era, learning why certain ingredients were absent and what would have been different about our dinner plates in 1942.



Watch the full video on our website
www.visitlancaster.org.uk/museums

**Lancaster City Museum
& The King's Own**
Market Square
Lancaster

Lancaster Maritime Museum
St. George's Quay
Lancaster

The Cottage Museum
Castle Hill
Lancaster

Follow us on social media @lancastercitymuseums



www.visitlancaster.org.uk